


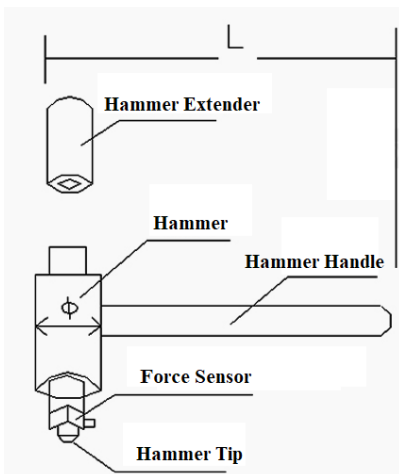




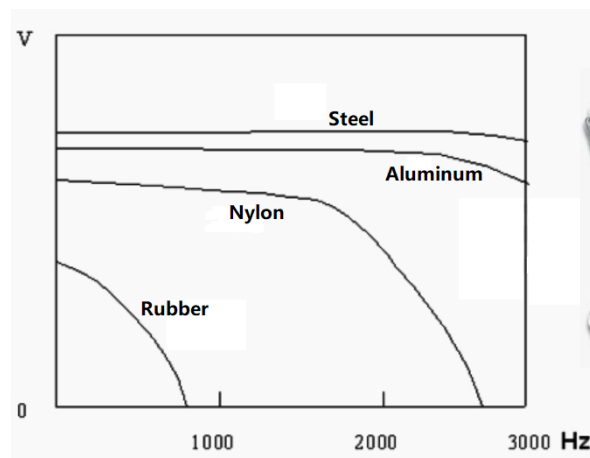
IEPE Impact Hammers

Specifications:

Model	LC00KE	LC01KE	LC02KE	LC03KE	LC04KE
					
Measurement Range	200 N	2 kN	5 kN	30 kN	60 kN
Sensitivity	~25 mV/N	~2.5 mV/N	~1 mV/N	~0.167 mV/N	~0.083 mV/N
Resonant Frequency	≥ 70 kHz	≥ 40 kHz	≥ 40 kHz	≥ 40 kHz	≥ 40 kHz
Hammer Mass	3.7 g	61.5 g	61.5 g	350 g	350 g
Hammer Tip Mass	-	Steel: ~13.8 g Aluminum: 15.5 g Rubber: 14.7 g Nylon: 13.9 g		Steel: ~61.5 g Aluminum: 74.2 g Rubber: 69.2 g Nylon: 68.4 g	
Hammer Extender Mass	-	24 g		124 g	
Head Diameter	-	Φ17		Φ30	
Handle Length	110 mm	240 mm		280 mm	
Output at Bottom of Handle	L5	BNC			
Calibration Certificate	Included				
Accessories	1. Hammer Tips: Steel, Aluminum, Rubber, Nylon 2. Hammer Extender 3. 2 m L5-to-BNC or BNC-to-BNC cable 4. Tool case				



Structure Diagram



Typical frequency response with different hammer tips
(Pulse width and frequency response vary with hammer tip materials)

